

The Eliminator 700 Series

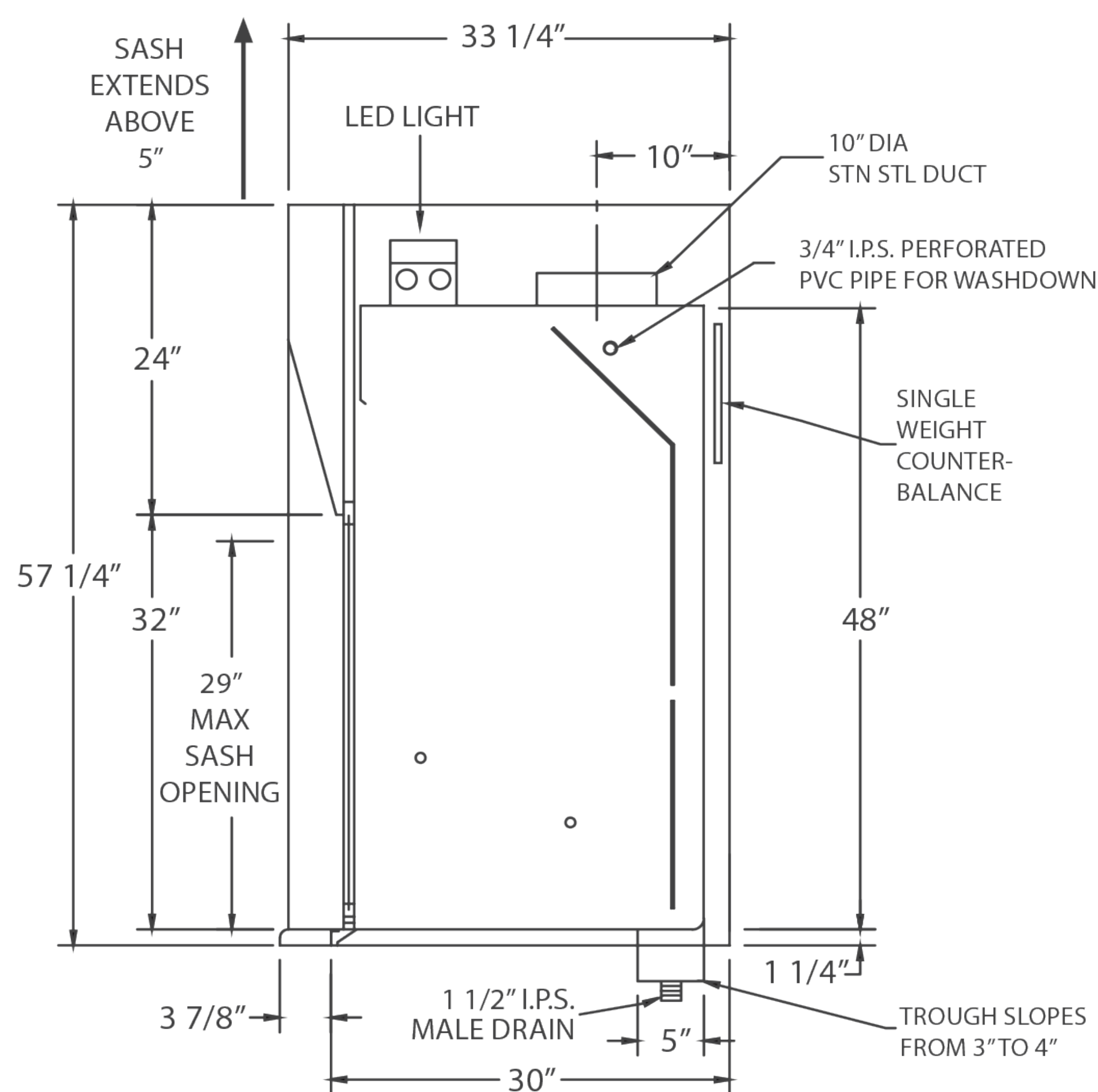
The Eliminator 700 Perchloric Acid Hood has the same aerodynamic design as the 100 series, with a 45-degree angle around the fascia and a flush-mount radiused airfoil across the bottom to minimize turbulence and provide increased performance.

ELIMINATOR 700 - PERCHLORIC ACID HOOD

Perchloric Acid Hood - For Safe Handling of Perchloric Acid



- Powder coat finish
- Full frame construction
- Shaft drive sash
- LED light with bulbs
- Flush-mount airfoil
- Full-length finger lift
- Louvered front for by-pass
- 316 stainless steel one-piece integral work surface and liner.
- Built-in trough
- Manual washdown
- Stainless steel sash
- Stainless steel airfoil



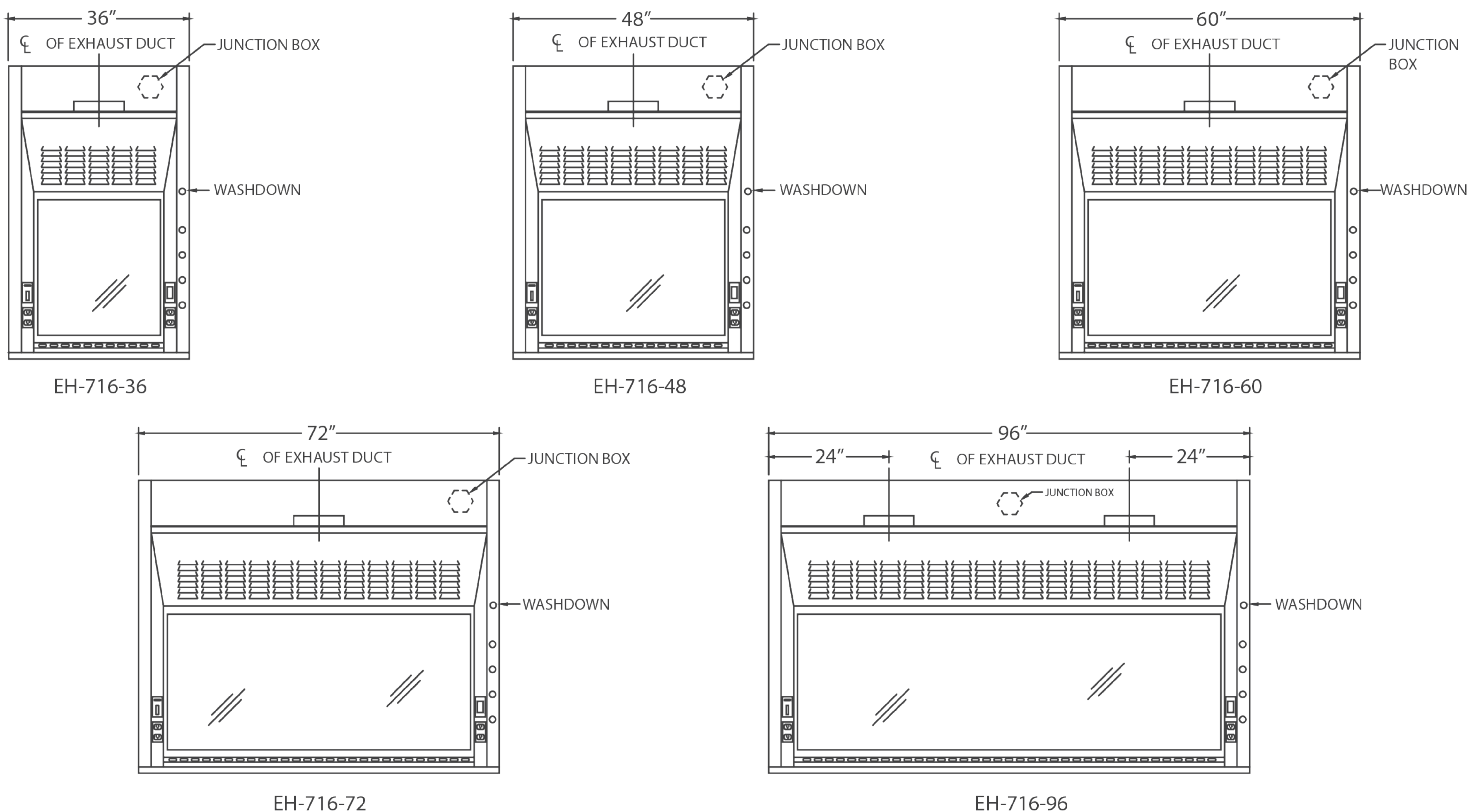
U.L. 1805
Classified

Part Number	Superstructure			Integral Worktop			Hood Opening		CFM @ 29"*	CFM @ 18"*	SP	Blower Model #	Shipping Weight
	W	H	D	W	H	D	W	H					
EH-716-36	36"	56"	33-1/4"	36"	1-1/4"	30"	26"	29"	567	354	.25	BL-600-36	190
EH-716-48	48"	56"	33-1/4"	48"	1-1/4"	30"	38"	29"	833	521	.25	BL-600-48	560
EH-716-60	60"	56"	33-1/4"	60"	1-1/4"	30"	50"	29"	1100	688	.34	BL-600-60	675
EH-716-72	72"	56"	33-1/4"	72"	1-1/4"	30"	62"	29"	1367	854	.34	BL-600-72	790
EH-716-96	96"	56"	33-1/4"	96"	1-1/4"	30"	86"	29"	1900	1188	.40	BL-600-96	1025

The Eliminator 700 Series

This hard-working hood also features a built-in trough to capture runoff in washdown procedures where perchloric acid is in use. In addition, there is a manual washdown feature for the areas behind the baffles as well as the duct-collar areas. The interior is fabricated of type 316 stainless steel, integrally welded to a 316 stainless steel work surface, then buffed and polished to a #4 finish. The top is 1-1/4" with a 1/4" dish to retain spills. The airfoil and sash are also made of 316 stainless steel. The EH-700 is built tough to withstand the daily use of perchloric acid, while keeping the workplace safe.

ELIMINATOR 700 - PERCHLORIC ACID HOOD



ACCESSORIES

ITEM	AMS PT#	PAGE #	ITEM	AMS PT#	PAGE #
Ceiling Enclosures	CE	33	Pre-Wiring	PREW	
Plumbing Accessories		34	Sash Stops	SASHSTOP	38
Electrical Accessories		35	Chain and Sprocket Drive	CHNSPK	CALL
Alarms	ALARM	32	Push Button Sash	PUSHBUTTON	38
Base Cabinets	BC	36	Combination Sash	H&V	CALL
Blowers	BL	CALL	Lattice Assembly	LATTICE	CALL
Pre-Plumbing	PREP		Auto Sash Return	AUTORETURN	38