

The Eliminator 200 Series

The Eliminator 200 series provides the same aerodynamic design features as the EH-100 airfoil hood series, with entrance from two sides. This makes it ideal for use in classroom or prep room settings. A 45-degree angle around the fascia and a flush-mount radiused airfoil across the bottom provide minimized turbulence and increased performance.

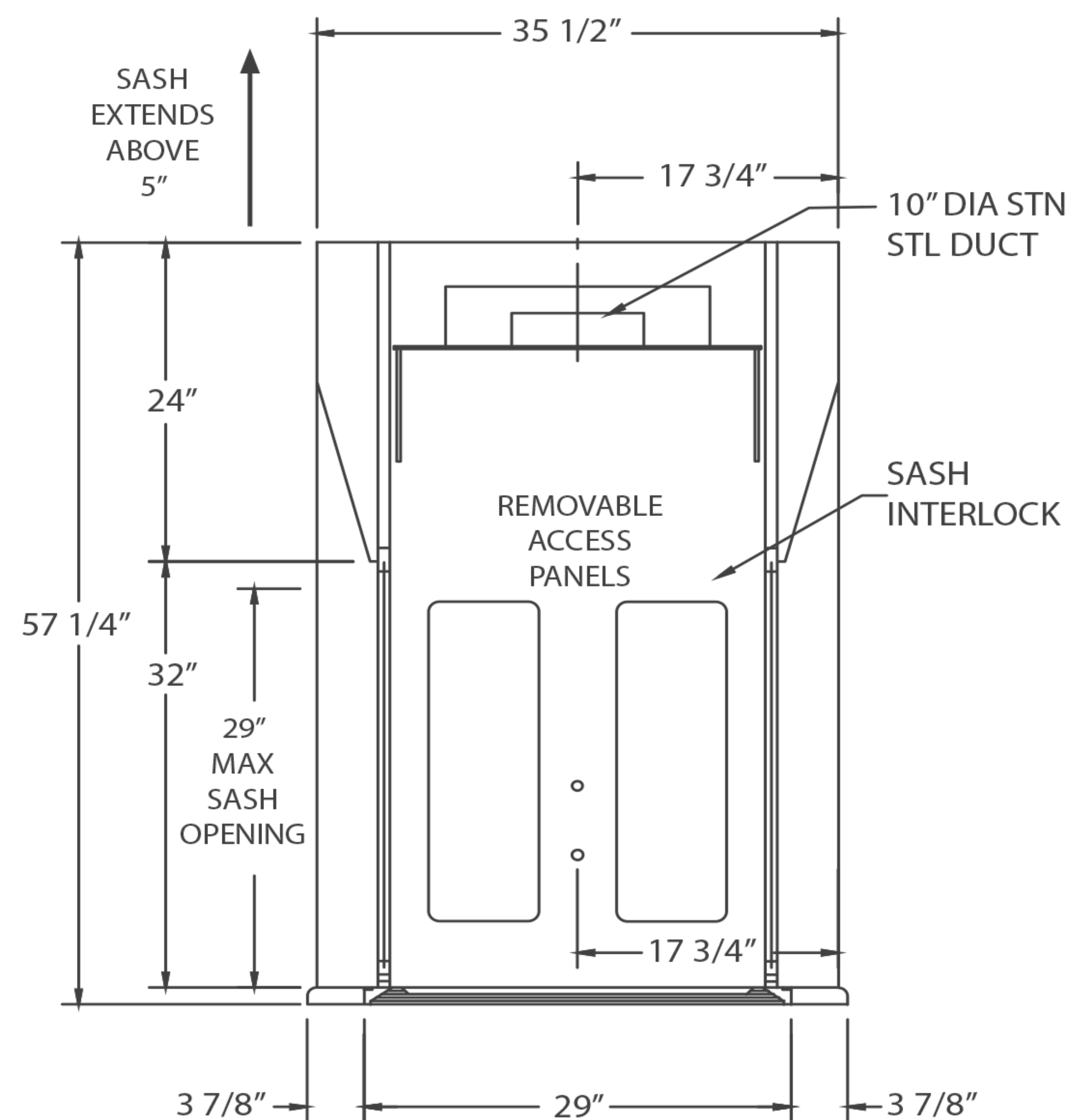
ELIMINATOR 200 - DOUBLE-SIDED 100 SERIES

Double-Sided 100 Series - Dual Access



U.L. 1805
Classified

- Powder coat finish
- Full frame construction
- U.L. listed poly resin liner
- Flush-mount airfoil
- Knock down capability
- LED light with bulbs
- Full-length finger lift
- Louvered front for by-pass
- 10" round S/S duct collar



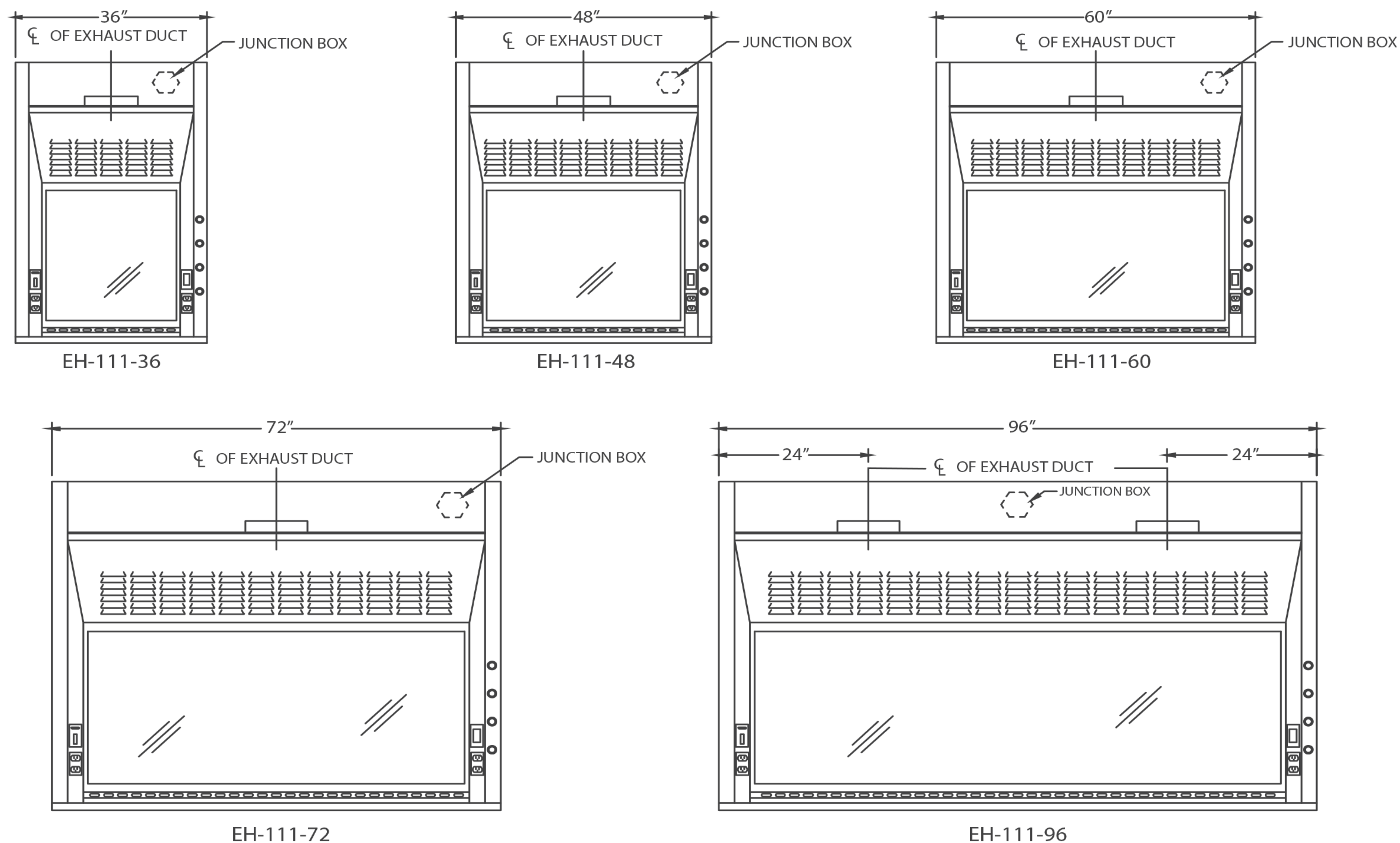
Part Number	Superstructure			Worktop			Hood Opening		CFM @ 29"*	CFM @ 18"*	SP	Blower Model #	Shipping Weight
	W	H	D	W	H	D	W	H					
EH-211-36	36"	56"	35-1/2"	36"	1-1/4"	29"	26"	29"	567	354	.25	BL-100-36	400
EH-211-48	48"	56"	35-1/2"	48"	1-1/4"	29"	38"	29"	833	521	.33	BL-100-48	450
EH-211-60	60"	56"	35-1/2"	60"	1-1/4"	29"	50"	29"	1100	688	.34	BL-100-60	500
EH-211-72	72"	56"	35-1/2"	72"	1-1/4"	29"	62"	29"	1367	854	.34	BL-100-72	550
EH-211-96	96"	56"	35-1/2"	96"	1-1/4"	29"	86"	29"	1900	1188	.40	BL-100-96	650

The Eliminator 200 Series

The EH-200 features standard 5" (127 mm) posts to allow for electrical and remote control plumbing services on both sides, and these can be configured to your exact specifications.

Five standard sizes and an array of options make this one of the most flexible fume hoods available.

ELIMINATOR 200 - DOUBLE-SIDED 100 SERIES



ACCESSORIES

ITEM	AMS PT#	PAGE #	ITEM	AMS PT#	PAGE #
Ceiling Enclosures	CE	33	Sash Stops	SASHSTOP	38
Plumbing Accessories		34	Chain and Sprocket Drive	CHNSPK	CALL
Electrical Accessories		35	Stainless Steel Sash	SS SASH	38
Epoxy Tops	ET	39	Stainless Steel Airfoil	SS AF	
Alarms	ALARM	32	Push Button Sash	PUSH BUTTON	38
Base Cabinets	BC	26	Combination Sash	H&V	38
Blowers	BL	CALL	Lattice Assembly	LATTICE	CALL
Pre-Plumbing	PREP		Auto Sash Return	AUTO RETURN	38
Pre-Wiring	PREW				